

The background of the entire page is a light beige or cream color, overlaid with a delicate, intricate line-art pattern of various flowers and leaves. The flowers include large, five-petaled blossoms, smaller buds, and clusters of tiny flowers, all rendered in a minimalist, sketch-like style. The overall aesthetic is clean, elegant, and natural.

ELGON®

**HAIR &
SCALPCARE**

Products and
services

UNIQUE TREATMENTS



UNIQUE TREATMENTS

Our hair says a lot about us, and when it looks **beautiful, healthy and shiny**, we feel good and comfortable.

Each of us has our own personal way of contemplating beauty. **We are all different and unique!** This is the philosophy behind the Elgon Unique Treatments concept - a world of high-performance Hair&Scalp Care services and products, **that meet all the needs of professionals and their customers in a targeted manner.**

UNLIMITED POSSIBILITIES FOR HAIR&SCALPCARE SERVICES

Caring for your **scalp and lengths** is essential for your hair's health and beauty.

All Elgon Hair&Scalp Care lines adhere to the highest quality standards, are dermatologically tested and contain Redoxina 2.0, a complex of plant origin that acts on the hair, rendering it visibly more youthful, stronger and healthier. Combined with the specific active ingredients of each line and ever-innovative formulas, it enables the hairstylist to offer **effective and targeted professional treatments with immediately visible results.**

The Hair&Scalp Care products in the different lines can be combined according to particular needs, **creating infinite possibilities for the personalisation of services and treatment programmes**, for a high level of customer satisfaction and loyalty.

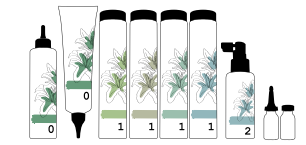
The ease of use of the products not only encourages retail sales of the various home treatments, but also offers a unique working experience, making it easier for less experienced staff to provide in-salon services.

SCALPCARE

PRIMARIA

Prevents and solves scalp conditions such as excess sebum, dandruff and hairloss.

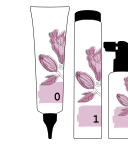
Scalpcare Beauty Specialist



SINSEA

Prevents and solves scalp conditions typical of sensitive skin: flaking, redness and itching.

Lenitive Treatment



HAIRCARE

INFUSION

Intensifies and makes each care treatment truly unique.

Concentrate Boosters: to personalize all treatments



SUBLIMIA

Addresses the top 10 needs of all hair types.

10 in 1 Treatment



LUMINOIL

Hydrates and delivers instant shine.

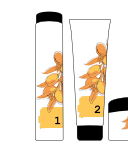
Express Treatment



ARGÁN

Hydrates, nourishes and protects dry or dehydrated hair.

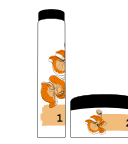
Beautifying Treatment



REFIBRA

Repairs damaged hair.

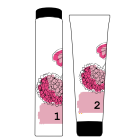
Rebuilding Treatment



DENSITY

Bestows body upon fine hair.

Bodifying Treatment

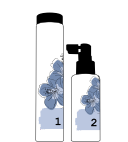


GREY HAIR CONTROL

GH-REVERSE

Prevents and delays the appearance of grey hair.

Anti-grey Treatment



For more details on the lines, go check the products area of the Elgon website www.elgoncosmetic.com



SCALPCARE



HAIRCARE

PRIMARIA Scalpcare

PRIMARIA

The scalp is constantly exposed to numerous stress factors that cause altered states, such as environmental stress (including pollution and germs), bad eating habits, aggressive or incorrect products and factors relating to seasonality. A sub-optimal status of the scalp can cause **excess sebum, dandruff and hair loss**.

Primaria offers a treatment programme to prevent and address these widespread and sensitive issues. The compact yet comprehensive range offers the possibility of creating effective, innovative and personalised scalp care and wellbeing services. **With Prebiotics**, for a balanced scalp and healthy, lustrous hair.



**DERMOPEELING
TREATMENT**

150 ml

Pre-shampoo exfoliating treatment to detoxify and mineralize the scalp.



**REBALANCING
TREATMENT**

200 ml

Pre-shampoo treatment with white clay to absorb excess sebum.



**BIODAILY
SHAMPOO**

10 ml, 250 ml,
1000 ml

Gentle formula ideal for frequent or daily cleansing of all hair types.



**REBALANCING
SHAMPOO**

10 ml, 250 ml,
1000 ml

Anti-sebum shampoo for oily scalp.



**STIMULATING
SHAMPOO**

10 ml, 250 ml,
1000 ml

Shampoo for weak hair, prone to thinning.



**STIMULATING
ANTI HAIRLOSS
TREATMENT**

10 fiale x 8 ml

Prevents hair loss by increasing the amount of hair in the growth phase.



**PURIFYING
SHAMPOO**

10 ml, 250 ml,
1000 ml

Gentle anti-dandruff shampoo, helps prevent the reappearance of dandruff.



**PURIFYING
LOTION**

100 ml

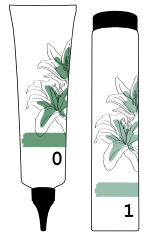
Purifying lotion, prolongs the effects of the salon service, helping to control and prevent dandruff.



FREE FROM: SLES, SLS, paraben, artificial colorants, silicones

SERVICES

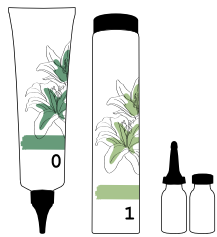
SCALPCARE
BEAUTY SPECIALIST



Need to purge your hair of pollution thanks to an exfoliating scrub?

DETOX (scalp&lengths)

Dermopeeling Treatment +
Biodaily Shampoo

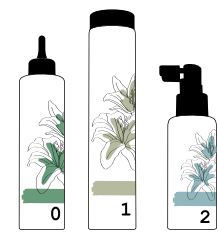


Need to promote re-growth and lengthen the life cycle of your hair?

STOP HAIRLOSS

Dermopeeling Treatment +
Stimulating Shampoo +
Stimulating Anti Hairloss Treatment*

** Test carried out on 20 volunteers for 12 weeks*



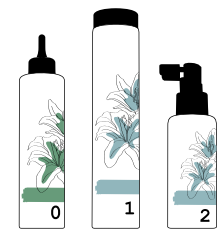
Want a purified scalp that breathes?

CONTROLLED PURENESS

Rebalancing Treatment +
Rebalancing Shampoo +

Purifying Lotion*

**For an even more effective treatment, where sebum is associated with an unpleasant odour.*



Want a clean, comfortable and healthy scalp?

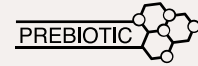
STOP DANDRUFF

Rebalancing Treatment +
Purifying Shampoo +
Purifying Lotion

**Stimulating Anti Hairloss Treatment - Test carried out on 20 volunteers for 12 weeks.*

ACTIVES

PRIMARIA,
ACTIVES



PREBIOTIC COMPLEX

Prebiotics are substances of plant origin that nourish the microbiome, i.e., the set of 'good bacteria' that act as a shield against the damaging effects of external agents and pathogenic microorganisms. They help to increase the natural defences for a balanced scalp and healthy, lustrous hair.



ANTI-POLLUTION COMPLEX

Dust, fumes and pollutants are deposited onto our scalp: the environment in which we live prevents the scalp from 'breathing'. The Anti-Pollution Complex is a complex of plant-derived fibres that exert an anti-pollution action by preventing the absorption of pollutants at scalp level and by helping to create a barrier against heavy metals and other environmental stress factors.



REDENSYL®

Redensyl is an innovative complex rich in zinc, larch and green tea extracts that acts on the hair follicle and exerts an anti hairloss action, for fuller and stronger hair.



REDOXINA 2.0

Complex containing hyaluronic acid and plant keratin. Makes hair look stronger, youthful and healthy with a time control effect.

OLFACTORY NOTE:
aromatic with intense accents.

PROMOTE RETAIL AND
RECOMMEND THE RIGHT
PRODUCTS FOR HOME
MAINTENANCE

PRIMARIA'S ANSWER

	PRE-TREATMENT	SHAMPOO	POST-TREATMENT
SEBUM			
DANDRUFF			
HAIR LOSS			
FOR ALL HAIR TYPES			

BEAUTY AND WELLBEING
IN BALANCE

SINSEA
Lenitive Treatment



SINSEA

4 out of 10 people have a sensitive scalp, skin type, aggressive chemical treatments, pollution, stress and an unbalanced diet are just some of the possible causes.

Use Sinsea to offer a brand new service to your customers before coloring: prep the scalp with a new soothing treatment. Use also to solve scalp anomalies, such as flakiness, reddening and itching

**SINSEA:
THE ANSWER TO A SENSITIVE AND
REDDENED SCALP, FLAKING AND ITCHING**



**SCALP
CALMING
TREATMENT**

10 ml, 150 ml

Pre-shampoo with an intense soothing and anti-redness action.

**CALMING
MICELLAR
SHAMPOO**

10 ml, 250 ml, 750 ml

Gently cleanses.

**CALMING
LOTION**

100 ml

Prevents itching, flaking and redness.



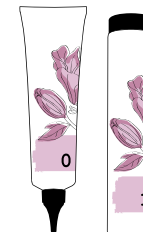
FREE FROM: SLES, SLS, parabens, EDTA, silicones

SERVICES

**LENITIVE
TREATMENT**

Want to prep your scalp before a colour service?

SCALP PROTECTION
2 weeks before the color service



SALON

Scalp-calming Treatment + Calming Micellar Shampoo

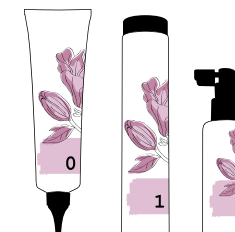


HOME

Calming Micellar Shampoo + Calming Lotion

Red sensitive scalp with flakiness and itching?

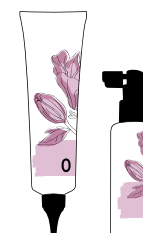
SCALP WELLBEING
3 - product synergy



Scalp-calming Treatment + Calming Micellar Shampoo + Calming Lotion

Red scalp following a technical service?

**SOS SCALP AFTER
TECHNICAL SERVICES
TREATMENT**



Scalp-calming Treatment + Calming Lotion

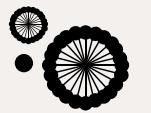
ACTIVES

**SINSEA,
ACTIVES**



LIPOSOME RICH IN PLANT-DE-RIVED ACTIVE INGREDIENTS

Microscopic spheres that, on coming into contact with the scalp, release extracts of euphrasia, lemon balm and magnolia, thereby exerting a targeted anti-inflammatory and antioxidant action.



HOW DOES A MICELLAR SHAM-POO WORK?

The ultra-gentle surfactants in Sinsea Calming Micellar Shampoo combine in spherical structures called micelles, which have an affinity for dirt and cleanse the scalp without irritating the sensitive skin.



REDOXINA 2.0

Plant-derived complex that acts on the hair, making it stronger, healthier and more youthful looking, whilst exerting a time-control effect.

**Calming Micellar Shampoo:
FRESH FRAGRANCE
WITH TONES OF FERN
AND LAVENDER.**

Other products: fragrance-free.

INFUSION Concentrate Boosters

INFUSION

Every individual is Unique, with specific needs even in terms of their hair. It is therefore necessary to identify a treatment protocol with the perfect combination of products.

3 additives to enhance shine, body and nourishment.

INFUSION: CUSTOMIZE EVERY HAIRCARE TREATMENT TO FIT UNIQUE NEEDS OF THE CUSTOMER



SUPREME BRILLIANCE

100 ml

Bestows shine and lustre upon the hair.

SUPREME DENSITY

100 ml

Makes the hair thicker and full-bodied.

SUPREME NOURISHMENT

100 ml

Nourishes and leaves the hair extremely soft and manageable.

BASE CREAM

5 ml

Universal cream to maximise the effect of additives on the hair.

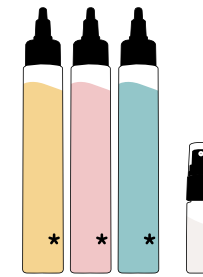


FREE FROM: parabens, SLS, SLES

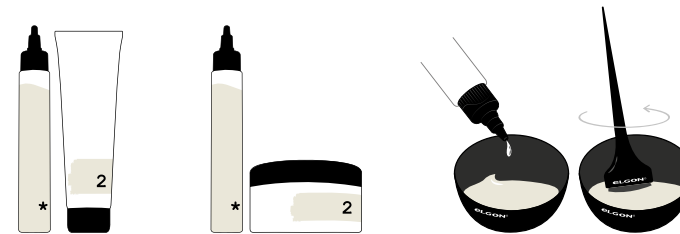
SERVICES

UNIQUE TREATMENT

Elgon Infusion are intense concentrates with which to create specific hair treatments according to needs.

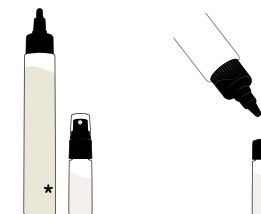


- 1 Add Elgon Infusion to any mask or conditioner and boost your regular treatment.



-  1 gr (1 squeeze)
-  2 gr (2 squeeze)
-  3 gr (3squeeze)

- 2 Add the Infusion to the Base Cream according to the hair's needs, up to the mark indicated on the pack. This special preparation will render your haircare ritual even more effective.



ACTIVES

INFUSION, ACTIVES



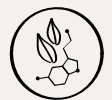
ACACIA COLLAGEN

Creates a protective film that provides the hair with strength and flexibility.



PLANT-BASED KERATINE

Improves body shine and softness.



YUZU CERAMIDES

Help repair damaged hair and promote the renewal of the hair structure.

OLFACTORY NOTE:
oriental with enveloping
spicy, musky and woody
tones



SUBLIMIA
10 in 1 Treatment

SUBLIMIA

The lengths are often difficult to style and the hair lacks shine and hydration, as well as body and manageability. Heat sources and UV rays can often damage the hair and cause color fading. Or simply, the style does not hold for long enough.

Dynamic DO-ALL line formulated to take care of all types of hair, keeping it ageless and healthy.

**SUBLIMIA:
THE DYNAMIC DO-ALL LINE,
10 BENEFITS IN 1 GESTURE**



**HAIR
DD SHAMPOO**

10 ml, 100 ml,
250 ml, 750 ml

Gently cleanses with 10 real benefits

**HAIR
DD MASK**

10 ml, 100 ml,
250 ml, 500 ml

Conditions without weighing down thanks to the absence of silicones.

**HAIR
DD CREAM**

70 ml, 150 ml

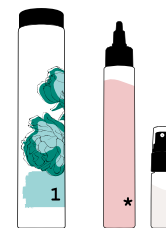
Dynamic Do-All no-rinse cream.



FREE FROM: artificial colorants, SLES, SLS, parabens, salt

SERVICES

**10 IN 1
TREATMENT**

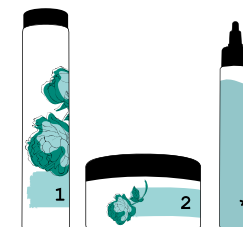


Fine and lifeless hair?

DD BODY

Light, moisturized, hair, hairstyle lasts longer

Hair DD Shampoo +
Infusion Supreme Density +
Cream Base

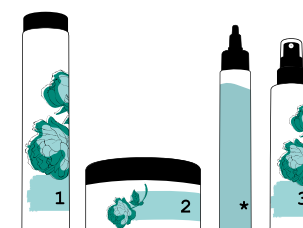


Normal and dull hair?

DD SHINE

Shiny, soft, silky hair.

Hair DD Shampoo +
Hair DD Mask +
Infusion Supreme Brilliance

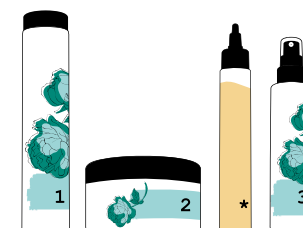


Thick and dull hair?

DD EASY COMB

Easy to comb, shiny and silky hair.

Hair DD Shampoo +
Hair DD Mask +
Infusion Supreme Brilliance +
Hair DD Cream



Thick, dry, unruly hair?

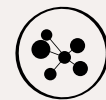
DD NUTRI-COSMETIC

Controlled, nourished hair, with better cosmetic feel.

Hair DD Shampoo +
Hair DD Mask +
Infusion Supreme Nourishment +
Hair DD Cream

ACTIVES

**SUBLIMIA,
ACTIVES**



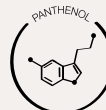
**COMPLEX OF
AMINO ACIDS**

Mix of amino acids selected to bring various benefits to the hair: filling and filming effect, increase in fibre strength, colour protection



UV FILTERS

Protect the hair from the sun's rays.



PANTHENOL

Moisturizing and softening effect.



REDOXINA 2.0

Complex with hyaluronic acid and vegetable keratin for stronger and healthier hair.

**10 REAL
BENEFITS**

- 1 Hair manageability
- 2 Anti age
- 3 Easy styling
- 4 Heat protection
- 5 Shine
- 6 Moisture
- 7 UV filters
- 8 Longer lasting style
- 9 Detangling
- 10 Anti-fading

OLFACTORY NOTE:
fresh florals with intense woody accents.

LUMINOIL

Express Treatment

LUMINOIL

Modernity and speed go hand in hand: today's women seek express treatments that do not compromise on hydration, shine and manageability.

With Luminoil, you can offer express services for instant hydration and luminosity.

LUMINOIL: EXPRESS TREATMENTS FOR INSTANT MOISTURE AND SHINE



CLARIFYING SHAMPOO pH 7.5

10 ml, 250 ml, 750 ml

Deep cleansing and pre-technical services

INSTANT SYNERGY

100 ml, 300 ml

Express moisture.

INSTANT MOISTURE BOOST

200 ml

Instant boost of nourishment.

DRY SHAMPOO

200 ml

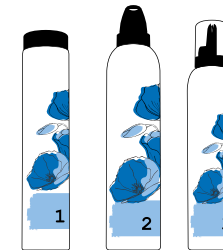
Instantly revives the hair.



FREE FROM: parabens, sodium chloride, artificial colorants

SERVICES

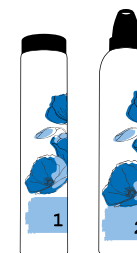
EXPRESS TREATMENT



The answer to dull and dehydrated hair?

EXPRESS

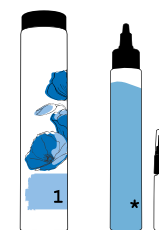
Clarifying Shampoo pH 7.5 + Instant Synergy + Instant Moisture Boost



Hydration and shine for fine hair in an instant?

SUPER EXPRESS

Clarifying Shampoo pH 7.5 + Instant Synergy



Ultra-glossy hair in a matter of minutes?

EXTRA SHINE

Clarifying Shampoo pH 7.5 + Infusion supreme shine + Infusion Cream Base

ACTIVES

LUMINOIL, ACTIVES



LIPID COMPLEX

A natural component found in the outer layer of the hair, which creates a protective film on the hair shaft. The hair appears healthier, shinier and stronger.



REDOXINA 2.0

Plant-derived complex that acts on the hair, making it stronger, healthier and more youthful looking, whilst exerting a time-control effect.

OLFACTORY NOTE:
fresh and lively florals.

ARGÁN Beautifying Treatment

ARGÁN

From the repeated use of straighteners and hair-dryers, to seasonality and the natural predisposition of the hair type: our hair is subject to a myriad of factors that can leave it feeling dry, dull and dehydrated.

Offer beauty rituals to all intents and purposes for all hair types with Argan - the ideal ally for soft and silky hair all year round.

ARGAN: A BEAUTY ELIXIR FOR DRY, DEHYDRATED HAIR



SUPREME SHAMPOO

10 ml, 100 ml,
250 ml, 750 ml

Hydrating shampoo that foams to create a soft, compact lather.

SUPREME CONDITIONER

10 ml, 50 ml,
150 ml, 750 ml

For fine/medium hair.

NUTRIENERGETIC MASK

10 ml, 100 ml,
250 ml, 500 ml

Nourishment in a rich creamy texture for thick/dry hair.

SUPREME OIL

3 ml, 30 ml,
100 ml

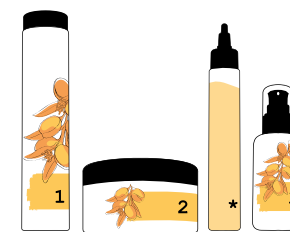
Seals the hair and protect color from fading.



FREE FROM: parabens, artificial colorants

SERVICES

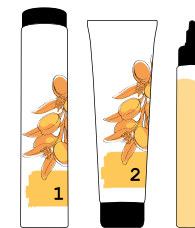
BEAUTIFYING TREATMENT



A boost of nourishment for dry, dehydrated and dull hair?

EXTRA NUTRI-RECHARGE

Supreme Shampoo +
Nutrienergetic Mask +
Infusion Supreme Nourishment +
Supreme Oil



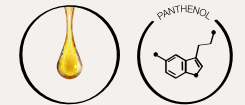
Sun-exposed hair?

NUTRI-RECHARGE

Supreme Shampoo +
Supreme Conditioner +
Infusion Supreme Nourishment

ACTIVES

ARGÁN, ACTIVES



ARGÁN OIL AND PANTHENOL

The perfect blend to hydrate and smoothen the hair. The synergy created by these ingredients make the products ideal following sun exposure.



REDOXINA 2.0

Plant-derived complex that acts on the hair, making it stronger, healthier and more youthful looking, whilst exerting a time-control effect.



UV FILTER

Protect the hair from the sun's rays.

OLFACTORY NOTE:
warm and spicy with floral
and woody accents
SUPREME OIL:
tropical fruits.



REFIBRA Rebuilding Treatment

REFIBRA

The lengths of the hair are subject to constant stress caused by a number of different factors, including frequent washing, the excessive use of styling products and frequent chemical treatments.

With Refibra, you can offer services to repair and restore damaged hair.

REFIBRA: REPAIRS AND PROTECTS DAMAGED HAIR



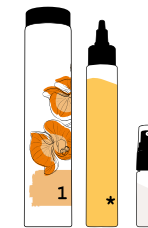
RESTORING SHAMPOO	RESTORING MASK	RESTORING LOTION	7 OIL BLEND
10 ml, 250 ml, 750 ml	10 ml, 250 ml, 500 ml	12 x 10 ml	3 ml, 30 ml, 50 ml
Cleanses and repairs.	Reconstructive effect for fragile or damaged hair.	Restoring booster.	Blend of protective oils.



FREE FROM: parabens, artificial colorants

SERVICES

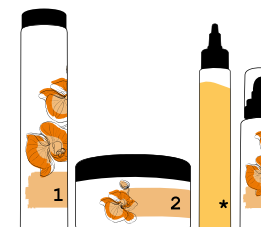
REBUILDING TREATMENT



Repairing action on fine hair?

SIMPLE RESTORE

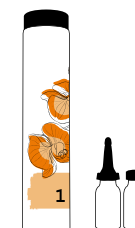
Restoring Shampoo +
Infusion Supreme Nourishment +
Infusion Cream Base



Damaged thick hair?

RADICAL RESTORE

Restoring Shampoo +
Restoring Mask +
Infusion Supreme Nourishment +
Infusion Cream Base



Want to create a protective pre-colour treatment shield or deeply repair damaged hair?

RESTORING BOOST

2 weeks prior to a service Technical or as needed

Restoring Shampoo +
Restoring Lotion

ACTIVES

REFIBRA, ACTIVES



PLANT-BASED EXTRACTS

Adhere to the surface of the hair, protecting it from stress, retaining water and adding shine. The result is healthier-looking hair.



REDOXINA 2.0

Plant-derived complex that acts on the hair, making it stronger, healthier and more youthful looking, whilst exerting a time-control effect.

OLFACTORY NOTE:
jasmine blossom with
woody tones.

DENSITY
Bodifying Treatment

DENSITY

Fine hair also tends to appear flat and dirty in a short space of time.

The solution is Density, a light-weight densifying treatment.

**DENSITY:
DENSITY AND BODY FOR FINE,
THIN, LIMP HAIR**



BODIFYING SHAMPOO

10 ml, 250 ml,
750 ml

Special cleansing for flat, fine and lifeless hair.

BODIFYING BALM

10 ml, 150 ml,
750 ml

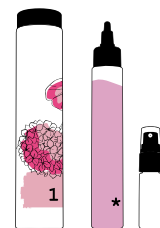
Thickening and Bodifying treatment.



FREE FROM:
parabens, artificial colorants

SERVICES

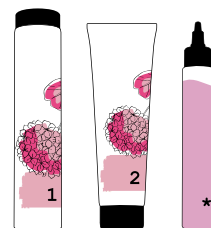
DENSIFYING TREATMENT



Flat, lifeless hair?

VOLUME SOFT

Bodifying Shampoo + Infusion Supreme Density + Infusion Base Cream



Need of extra volume?

VOLUME BOOST

Bodifying Shampoo + Bodifying Balm + Infusion Supreme Density

ACTIVES

DENSITY, ACTIVES



PLANT-BASED COLLAGEN

Obtained from Acacia, it boasts hydrating and film-forming properties; it seeks out and coats compromised cuticles and adds body.



REDOXINA 2.0

Plant-derived complex that acts on the hair, making it stronger, healthier and more youthful looking, whilst exerting a time-control effect.

OLFACTORY NOTE:
Floral mix of rose, freesia and lily of the valley.

GH-REVERSE
Grey Hair Control

GH-REVERSE

Over time less melanin is subsequently produced and the hair starts to turn grey.

Gh-Reverse prevents and delays the appearance of grey hair.

**GH-REVERSE:
GREY HAIR CONTROL**



ANTIGREY SHAMPOO

10 ml, 250 ml
Cleanses and prevents the appearance of grey hair.

ANTIGREY LOTION

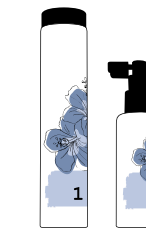
100 ml
Intensive anti-grey treatment.



FREE FROM:
parabens, artificial colorants, silicones

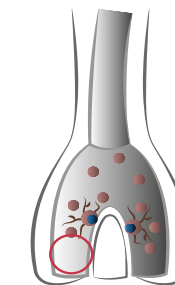
SERVICES

GH-REVERSE, ACTIVES

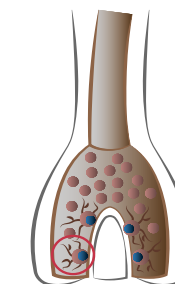


Antigrey Shampoo + Antigrey Lotion

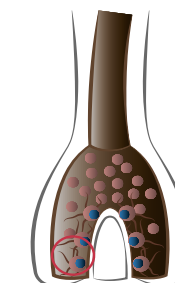
Proven results in 90 days.



Hair with a low pigment content.



Hair with a moderate pigment content.



Hair with a normal pigment content.

ACTIVES

GH-REVERSE, ACTIVES



GREYVERSE™

A peptide that stimulates melanogenesis and decreases oxidative stress in the hair bulb to reactivate melanin production and increase pigment in the hair shaft.

OLFACTORY NOTE:
Citrus and orange blossom.

ELGON®

@elgonofficial   
www.elgoncosmetic.com